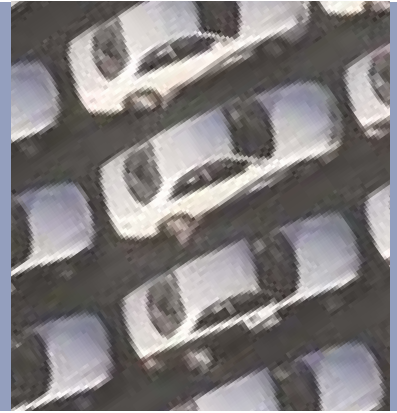


®, WAVECOM®, WISMO®, MUSE Platform®, and certain other trademarks and logos appearing on this document, are filed or registered trademarks of Wavecom S.A. in France or in other countries. All other company and/or product names mentioned may be filed or registered trademarks of their respective owners. 08/04



www.wavecom.com

wavecom®

WAVECOM S.A. - 3, esplanade du Foncet - 92442 Issy-les-Moulineaux Cedex - France - Tel: +33 (0)1 46 29 08 00 - Fax: +33 (0)1 46 29 08 08
WAVECOM, Inc. - 4810 Eastgate Mall - Second Floor - San Diego, CA 92121 - USA - Tel: +1 858 362 0101 - Fax: +1 858 558 5485
WAVECOM Asia Pacific Ltd. - 4/F, Shui On Centre - 6/8 Harbour Road - Hong Kong - Tel: +852 2824 0254 - Fax: +852 2824 0255

www.wavecom.com

automotive 

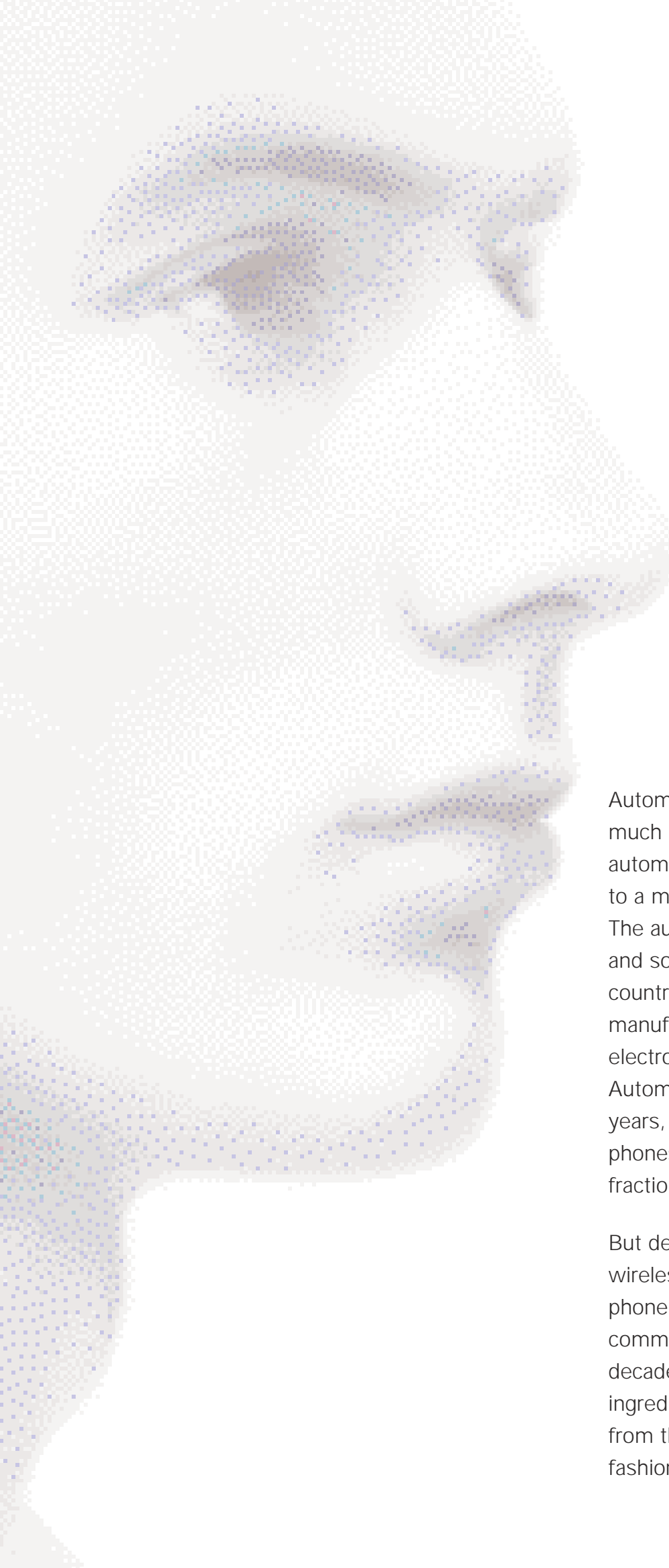


NOW IS THE TIME

To See Why Wavecom Is the Right Partner
for Automotive Telematics

wavecom®

WIRELESS SOLUTIONS FOR EVERYONE



Automobiles and cell phones do not have much in common. The lifetime of an automobile runs 10 years or longer, compared to a maximum 24 months for a cell phone. The automotive industry is part of the industrial and social backbone of the most advanced countries, while the majority of cell phones are manufactured alongside other low cost electronics goods in emerging Asian nations. Automotive products are developed over years, with high development costs, while cell phones spring up in just months for a only a fraction of the automotive investment.

But despite the dissimilarities, the same wireless technology that has propelled the cell phone into a ubiquitous personal communications accessory in less than a decade is now becoming an essential ingredient for the automotive industry. Far from the gadgetry and passing trendiness of fashion accessory phones, wireless technology



WIRELESS FOR AUTOMOTIVE TELEMATICS

is opening rich new opportunities for automobile manufacturers, system suppliers and dealers. In addition to a wealth of driver comfort, convenience and safety features, automotive telematics systems can strengthen manufacturer and dealer relationships with customers through emerging data collection and vehicle performance tracking.

The challenge facing wireless technology suppliers is to adapt their cell phone mindset and market orientation to the needs, competitive environment and industrial requirements of automotive manufacturers and their first tier of suppliers.

At Wavecom, we have been adapting advanced wireless technology to automotive industry needs for nearly a decade. As a system supplier, we believe we enjoy

an advantage over rivals rooted in simple components or a pure technology approach. As a supplier of wireless solutions, we are well aware that the wireless function is only one of many elements in a complex, multi-faceted on board electronic system. We understand that the ease and flexibility with which our wireless solutions can be integrated into telematics solutions is critical to auto makers and system suppliers.

As one of the first to bring wireless technology to automobile manufacturers and system suppliers, we have demonstrated our long-term commitment as well as our ability to work successfully alongside auto industry partners as they bring unique, innovative systems to market. Now more than ever before, rugged, reliable, road-proven Wavecom wireless technology enables automakers and system suppliers to seize the wireless opportunities.

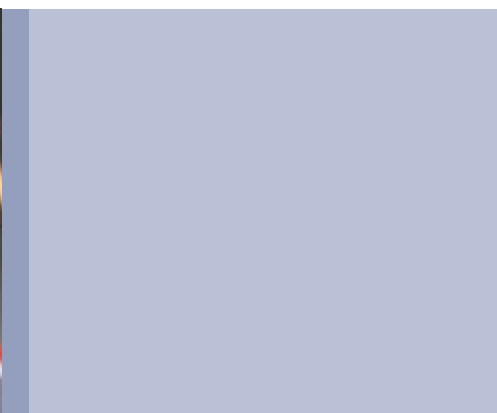


TELEMATICS MAKE DRIVING SAFER, EASIER, MORE FUN

In addition to driver benefits, telematics offers potential advantages for original equipment manufacturers (OEMs), automotive systems suppliers, car dealers and even insurance companies.

The combination of wireless communications with on-board electronic systems opens unlimited possibilities for unique, innovative automotive systems and features. These cover a wide range of features that are visible to consumers, such as safety benefits, driver convenience, comfort, and infotainment. But they also include potential benefits that are invisible to the consumer, such as data exchanges, vehicle maintenance and OEM.

Wireless data communications make it possible for manufacturers and dealers to maintain relationships with car drivers. This can lower costs by detecting warranty problems at early stage. What is more, by creating an ongoing dialogue, it enables OEMs to better understand and satisfy customer needs. For example, by downloading data from vehicles, manufacturers and dealers can track location and usage patterns, maintenance needs and vehicle performance data. In addition to ongoing customer relationships for maintenance and vehicle replacement, such applications can also help manufacturers to constantly improve product features and performance.



Security

- A hidden anti-theft application signals any unauthorized tampering with the vehicle ignition system and, via an integrated GPS function, tracks the vehicle as it moves. The ignition may be disconnected, and the doors locked, remotely.



Communications

- The voice recognition function included as part of an integrated voice and data communications system enables the driver to make and receive calls without taking his hands from the wheel.
- Emergency call and breakdown call capability
- e-calls
- e-safety



Driver comfort & convenience

- Drivers request selected location-related travel information such as nearby hotels, restaurants or filling stations and receive detailed step-by-step driving directions



Entertainment

- Passengers can enjoy on-line entertainment and gaming via a high speed wireless Web connection with IP capability

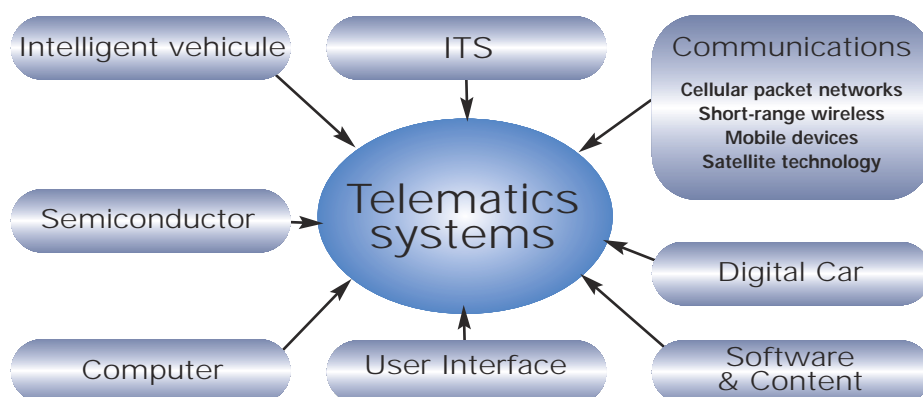


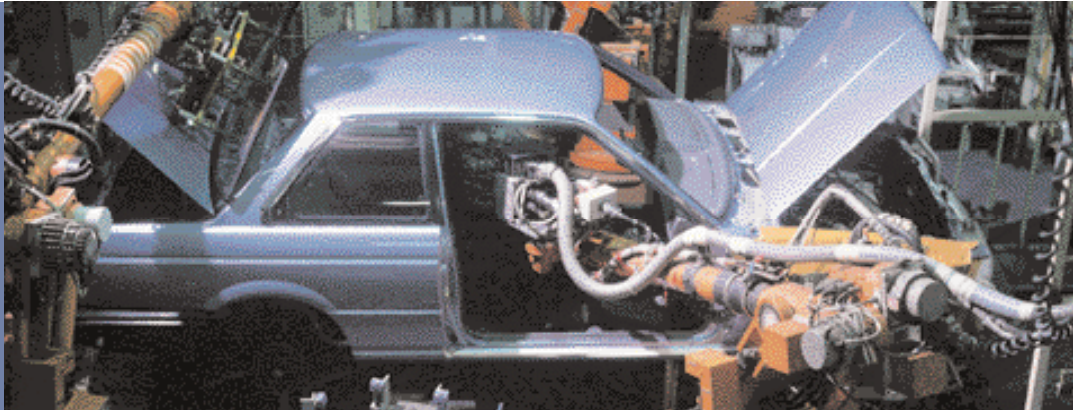
Vehicle performance & maintenance

- Drivers can diagnose problems thanks to a combined voice and data application enabling them to interact with the car manufacturer or dealer

HOW WAVECOM CONTRIBUTES TO TELEMATICS SYSTEMS

Wavecom provides manufacturers and system suppliers with wireless communications capabilities and a wide range of services enabling them to take maximum advantage of wireless opportunities to develop unique vehicle systems.





WE STAND BEHIND OUR CUSTOMERS ALL THE WAY

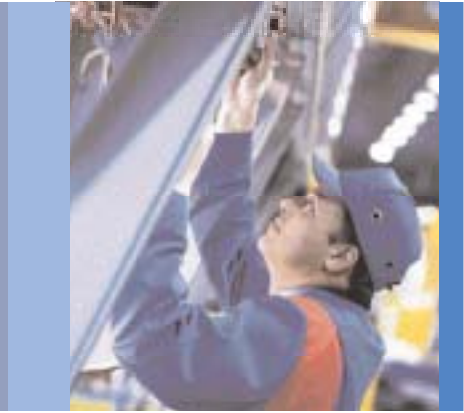
**Wavecom stands behind its
technology and its products.**

**But most importantly, we stand
behind our customers as they
develop and bring to market
unique, innovative wireless
features and functions.**

No two automakers are alike. Each has developed its own unique methods and processes. That is why the Wavecom approach to automotive systems is built upon flexibility and an adaptive collaborative model. The idea is to fit into the particular framework and working relationships that enable all involved in each project to contribute the best of their particular expertise and know-how. Thanks to the global scope and scale of its business, Wavecom is well qualified to collaborate with OEMs and system suppliers worldwide.

Today, smooth systems integration is among the foremost challenges. As electronic systems account for an increasing share of the total vehicle added value, and as they grow increasingly complex, there is constantly growing need for mutual understanding and close collaboration among all participants. Wavecom is committed to work alongside its OEM and system partners in an open, transparent fashion, freely sharing ideas and information to ensure shared success.

Wavecom automotive specialists contribute to such collaborative ventures by providing a range of high-level services throughout the entire product definition, design, development production and post-production cycle.



PROSPECTIVES

- Overviews of existing systems incorporating wireless
- Analyses of wireless possibilities & opportunities
- Reviews of technical options & constraints
- Training on wireless technologies

PRELIMINARY DESIGN

- Feasibility studies
- Telematic system overview
- Wireless requirements & implications
- Identification of the best Wavecom solution for the customer's unique application

PROJECT DEFINITION AND VALIDATION

- Hardware design support
- Software design support
- Integration of wireless function in telematic system
- Training & support on Wavecom development tools

PROJECT DEVELOPMENT

- Prototyping
- Testing
- Implementing modifications

PRE-INDUSTRIALISATION

- System supplier manufacturing support services
- Field testing
- Debugging

INDUSTRIALISATION

- Supply chain management
- Traceability
- Incident reporting

ONGOING EVOLUTION

- Ongoing analysis and evaluation of new opportunities based on:
 - product road map
 - telematics road map
 - wireless solutions road map



ROAD-PROVEN, NETWORK-PROVEN, CUSTOMER-PROVEN

Infinitely adaptable to specific applications, Wavecom wireless solutions are easy to integrate into telematics systems thanks to power & flexibility of Open AT software development tools

Designed and built specifically for automotive use, Wavecom automotive modules provide reliable, long-term wireless solutions for automotive telematics systems. Field-proven on dozens of wireless networks worldwide, the Wavecom range of plug-in modules covers both GSM/GPRS and CDMA environments. Interchangeable and upwards compatible, Wavecom modules provide the longest-lasting solutions available to automotive system designers. Wavecom is the only supplier that has maintained its basic connection and pin input/output configurations over the years, thereby avoiding costly, time-consuming design adjustments for customers.

Basic automotive module

Basic wireless connectivity for voice and data including GPRS Class 10, SMS, circuit-switched data and fax capability

Navigation automotive module

Basic wireless connectivity integrated with GPS capability in a single module, offering single coax antenna technology and dedicated AT commands for GPS

Smart car automotive module

All of the above plus an open-ended range of hardware and software possibilities for innovative future developments



THE MOST COMPLETE SOFTWARE DEVELOPMENT TOOLKIT

Wavecom's Open AT software development kit provides the world's most powerful, most flexible and easy-to-use set of applications development tools. Open AT enables developers to embed and run applications based on simple, standardized AT commands or dedicated APIs right on a Wavecom wireless module.

Open AT helps developers shorten time to market by reducing hardware design, software development, test and validation cycles. Eliminating extra components and using existing software building blocks helps reduce development costs and shrink hardware footprints. What is more, the Open AT Application Development Layer provides simple, ready-to-use templates for managing communications, messaging, hardware interfaces and more.

CONNECTIVITY: BLUETOOTH, IP AND MUCH MORE

The variety of wireless functions and protocols supported by Wavecom modules enables system developers to select those best suited to each particular application. These may include the unique feature SIM Access Profile (SAP). The SAP utilizes a Bluetooth link between a mobile phone's SIM card and an external GSM/GPRS device, enabling seamless transfer and operation of SIM information. This means that a built-in car phone can utilize the driver's (or another user's) mobile phone to connect to the GSM network using the external GSM roof antenna. It provides safe hands-free telephony with no need to switch the SIM card from the mobile phone to the car phone. For the car manufacturers, the SAP eliminates the need to provide holders for different mobile phone models, creating significant cost savings.

In addition to Bluetooth connectivity, Wavecom was the first module supplier to offer full Internet connectivity, including, for example, support for email, file transfer and Web connection. Because robustness and reliability are critical in the automotive environment, Wavecom selected an IP partner with proven experience in rugged environments.

To support vehicle tracking and data retrieval applications for manufacturers and dealers, Wavecom has built partnerships with leading IT systems suppliers and operators for end-to-end applications. For example, Wavecom solutions can provide built-in support for value added protocols such as IBM's MQ telemetry transport and Orange's M2M Connect.



FOCUSED ON CREATING SUSTAINABLE CUSTOMER VALUE

**Wavecom combines
the experience of a large
volume provider with the
responsiveness of a
technology leader and the
commitment and customer
service of a dedicated
automotive supplier.**

The Wavecom Quality program, known internally as Qu.e.st (Quality Enhancement Strategy), constitutes one of the cornerstones of the Wavecom strategy. It involves a broad ranging approach to all of the company's activities, encompassing suppliers and customers as well as employees.

Structured around recognized international quality standards, such as ISO TS 16949 and APQP, the Wavecom quality program aims to increase customer satisfaction, improve company efficiency and performance, and minimize uncertainties and risks.

WAVECOM QUALITY GUARANTY

To ensure that automotive customers benefit from the best possible quality for all our products and services, Wavecom pledges:

- To serve automotive customers with dedicated team
- To provide full support for customer design and development programs, including on-site engineering support and application development tools
- To achieve independent quality management certification, including ISO TS 16949 and APQP
- To ensure complete traceability
- To provide customers with complete and transparent exchanges of information regarding all aspects of our automotive business
- To provide relevant technical documentation covering all aspects of our software and hardware products and technologies
- To continually monitor industry and technology trends
- To share our long term vision through constantly-updated product and solution roadmaps



A Long Term Approach

Wavecom combines the experience of a large volume provider with the responsiveness of a technology leader and the commitment and customer service of a dedicated automotive supplier.

With more than 20 million modules currently operating in cell phones and other applications on networks worldwide, Wavecom has demonstrated its ability to deliver ready-to-go solutions to cost-conscious customers in highly competitive markets.

As a supplier to such recognized names as Magneti Marelli and Autoliv, Wavecom has been supplying leading OEMs and system suppliers since the very beginning of automotive telematics. This background and the dedicated automotive team testify to the company's long-term commitment to its automotive customers.

In 2003, Wavecom was named "supplier of the year" by Delphi Electronics Europe. The company was also awarded the Premium Prize in 2002 and 2003 (for companies with annual revenues of at least 15 million euros) and the Euronext Prize (for publicly listed companies) at Deloitte & Touche's Technology Fast 50 France awards.

As a technology leader, Wavecom continues to develop innovative new solutions for customers. Today, especially through its investments in innovative, dedicated circuits and silicon-based solutions, Wavecom continues to bring the best of technology to automotive customers in cost-effective, easy-to-use formats.

As wireless standards evolve and as technology progresses, automotive customers know they can continue to rely on Wavecom for a constant stream of wireless innovation designed for their specific needs.